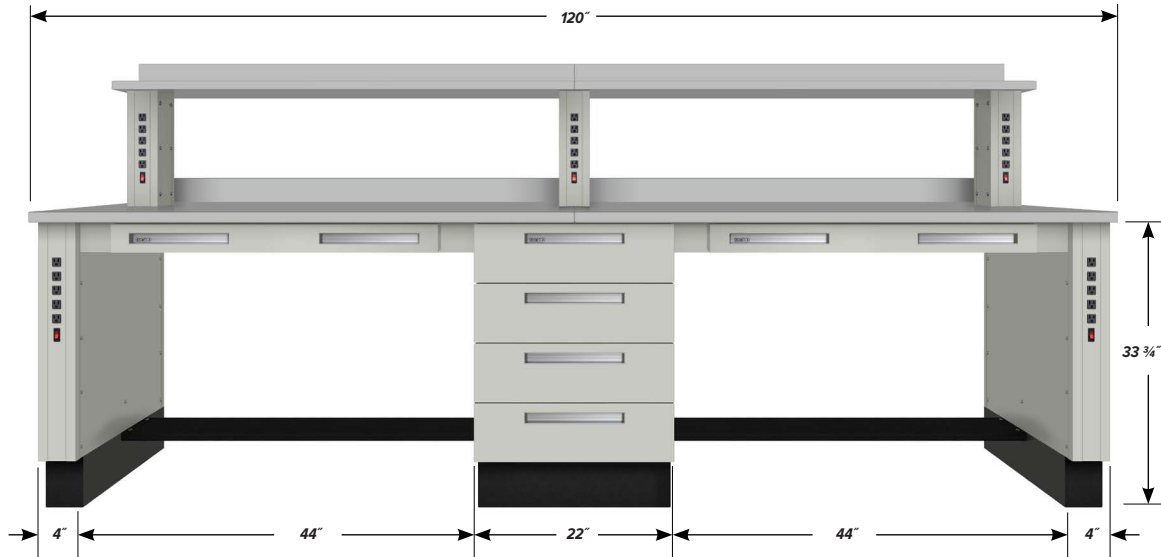


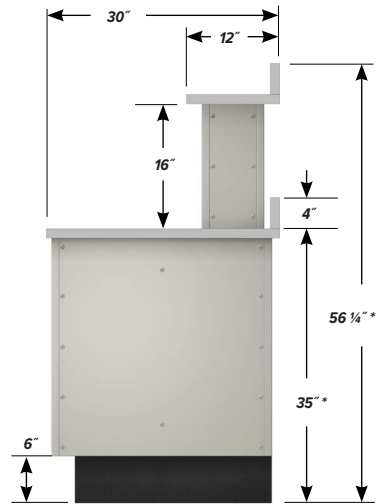
## 10' WORKBENCH TWS-4600

Teclab workbenches share common design features that have earned for Teclab the reputation in the industry as the “professional’s bench.” Typical features include an abundance of grounded outlets within easy reach; an infinite variety of drawer and door combinations to meet every job and storage requirement; expansive work surfaces, shelves, and back guards in a choice of task-oriented materials.



### FEATURES

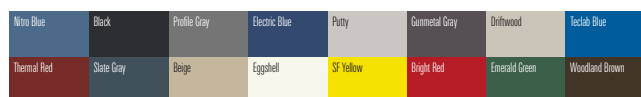
- Two **PL-15-EP-1** Panel Legs with 5 grounded outlets, plus combination circuit breaker rocker switch.
- One **C-2214** four drawer, 22" wide Base Cabinet
- Two **FR6-44** 44" Foot Rests
- Two **APD-3600** 36" wide Apron Drawers
- Four **AF-04** 4" Apron Fillers
- Three **SS-16-EP-1** 16" tall Shelf Supports with 5 grounded outlets, plus combination circuit breaker rocker switch.
- Two **TP1-3060-PVC** 30" x 60" x 1 1/4" plastic laminate Work Surfaces
- Two **SP1-1260-PVC** 12" x 60" x 1 1/4" Shelves of same material
- Four **BGP-60-PVC** 4" x 60" x 1 1/4" Back Guards of same material



\* HEIGHT SHOWN IS BASED ON A 1 1/4" THICK WORK SURFACE. OVERALL HEIGHT VARIES DEPENDING ON THICKNESS.

### FINISH OPTIONS

Powder coated steel components.



Custom paint color matching is available. Stainless Steel is also available.

### WORK SURFACE COLOR OPTIONS

Visual comparison. Color choices vary depending on work surface type.

