

WALL CABINETS - 48" WIDTH

Teclab Wall Cabinets have always been the professional's wall cabinet and when you compare us to the competition you'll see why Teclab has been the industry leader for more than 30 years.

Designed with our exclusive Double Wall construction using heavy-duty 18 gauge, furniture grade, cold rolled steel on all parts including shelves and doors.

Tops and bottoms of all cabinets feature solid construction for added strength and durability and use of our exclusive Teclab heavy-duty wall mounting bracket system allows for simple yet solid installation.

Sturdy reinforced shelves are adjustable in 2" increments. Wall Cabinets come standard with 2 shelves, however additional shelves are available to match your storage needs.

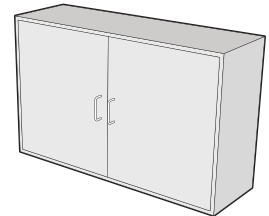
All Teclab Wall Cabinets are available with solid double wall steel or tempered safety glass doors. Glass doors can be ordered in clear or smoked glass. We attach these doors with durable industrial grade hinges for years of trouble free use and utilize stylish stainless steel handles for a professional look.

Environmentally responsible textured powder coatings are used for a durable, long-lasting finish. Standard and special order colors allow you to personalize your laboratory.

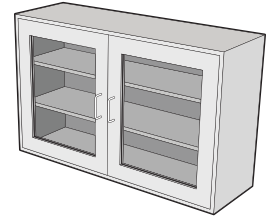
Teclab Wall Cabinets are also offered in stainless steel for the ultimate in durability and performance.



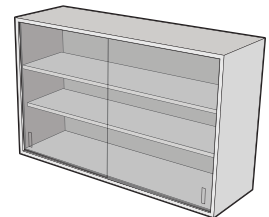
WC-4830-HSD
hinged solid doors
-XS (additional shelf)



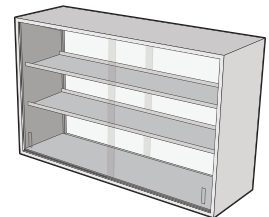
WC-4830-HGD
hinged glass doors
-XS (additional shelf)



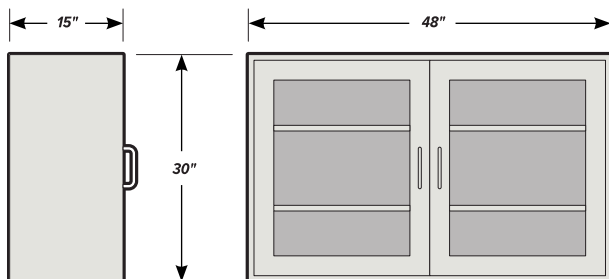
WC-4830-SGD
sliding glass doors
-XS (additional shelf)



WC-4830-SGD-PT
pass-through sliding glass doors
-XS (additional shelf)



48" WIDE WALL CABINET DIMENSIONS



FINISH OPTIONS

Powder coated steel components or brushed stainless steel finish.



* Denotes a non-standard color. ** Custom paint color matching is available