

**BENCH HIGH BASE CABINET WL-4843**

Teclab builds modular cabinetry of superior strength, thanks to twin full-perimeter frames. We also set door and drawer faces into the cabinet shell to protect the contents from spills.



**WL-4843 FEATURES**

**One full width "B" drawer, two half width "A" drawer, one half width "C" drawer, one "C" door base cabinet.**

Cabinet Dimensions: 48" wide, 35 1/2" high, 22" deep

**"B" Drawer (full width)**

Drawer Face Dimensions: 46 3/8" w, 6 1/16" h, 1" thick.  
 Drawer Body Inside Dims.: 43 7/8" w, 5" h, 19 1/2" deep.  
 Weight Capacity: 75 lbs.

**"A" Drawer (half width)**

Drawer Face Dimensions: 22 3/8" wide, 3 1/4" high, 1" thick.  
 Drawer Body Inside Dims.: 19 7/8" w, 2" h, 19 1/2" deep.  
 Weight Capacity: 75 lbs.

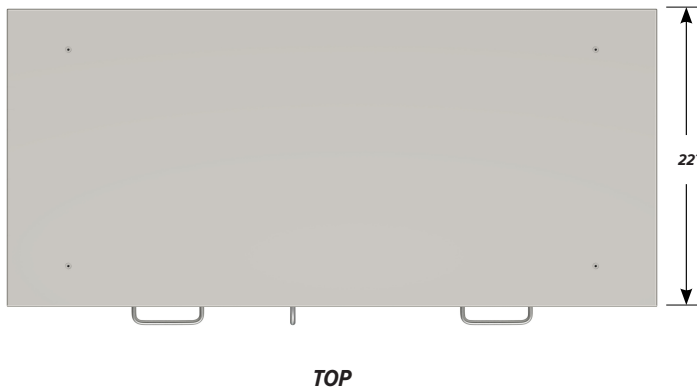
**"C" Drawer (half width)**

Drawer Face Dimensions: 22 3/8" w, 13 1/2" h, 1" thick.  
 Drawer Body Inside Dims.: 19 7/8" w, 9 1/2" h, 19 1/2" deep.  
 Weight Capacity: 75 lbs.

*All "C" drawers accept standard hanging files with the addition of our Hanging File Adapter Kit.*

**"C" Door with Right Hand Pull**

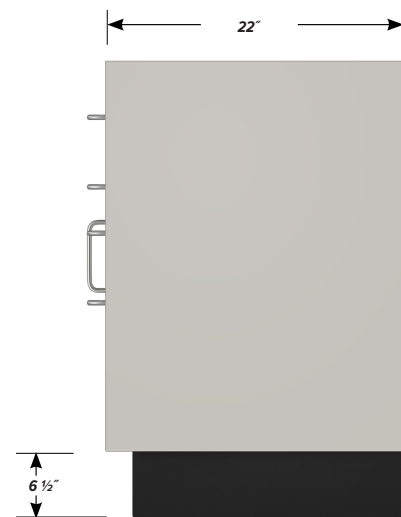
Door Face Dimensions: 22 3/8" wide, 20 3/8" high, 1" thick.



**TOP**



**FRONT**



**SIDE**