

**BENCH HIGH BASE CABINET WL-4841**

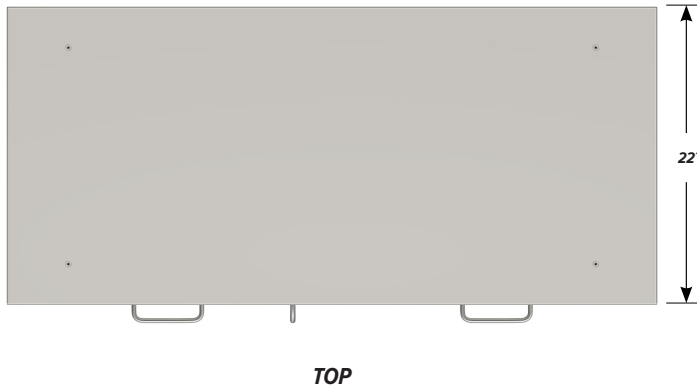
Teclab builds modular cabinetry of superior strength, thanks to twin full-perimeter frames. We also set door and drawer faces into the cabinet shell to protect the contents from spills.



**WL-4841 FEATURES**

**One full width "B" drawer, two half width "A" drawer, two half width "B" drawer, one "C" door base cabinet.**

Cabinet Dimensions: 48" wide, 35 1/2" high, 22" deep



**TOP**

**"B" Drawer (full width)**

Drawer Face Dimensions: 46 3/8" w, 6 11/16" h, 1" thick.  
 Drawer Body Inside Dims.: 43 7/8" w, 5" h, 19 1/2" deep.  
 Weight Capacity: 75 lbs.

**"A" Drawer (half width)**

Drawer Face Dimensions: 22 3/8" w, 3 1/4" h, 1" thick.  
 Drawer Body Inside Dims.: 19 7/8" w, 2" h, 19 1/2" deep.  
 Weight Capacity: 75 lbs.

**"B" Drawer (half width)**

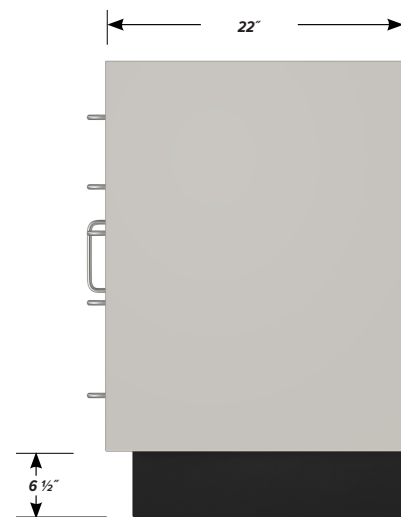
Drawer Face Dimensions: 22 3/8" w, 6 11/16" h, 1" thick.  
 Drawer Body Inside Dims.: 19 7/8" w, 5" h, 19 1/2" deep.  
 Weight Capacity: 75 lbs.

**"C" Door with Right Hand Pull**

Door Face Dimensions: 22 3/8" wide, 20 3/8" high, 1" thick.



**FRONT**



**SIDE**