

BENCH HIGH BASE CABINET WL-4817

Teclab builds modular cabinetry of superior strength, thanks to twin full-perimeter frames. We also set door and drawer faces into the cabinet shell to protect the contents from spills.



WL-4817 FEATURES

Four "B" drawer base cabinet.

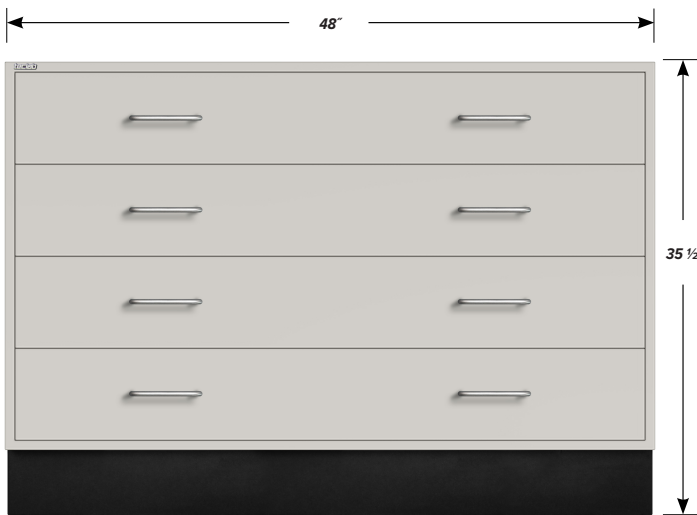
Cabinet Dimensions: 48" wide, 35 1/2" high, 22" deep

"B" Drawer (full width)

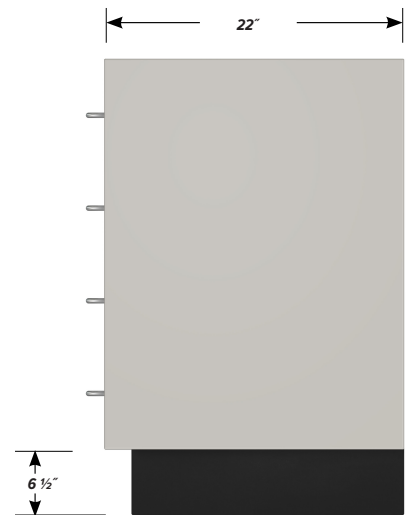
Drawer Face Dimensions: 46 3/8" w, 6 1/16" h, 1" thick.
Drawer Body Inside Dims.: 43 7/8" w, 5" h, 19 1/2" deep.
Weight Capacity: 75 lbs.



TOP



FRONT



SIDE