

## BENCH HIGH BASE CABINET WL-4244

Teclab builds modular cabinetry of superior strength, thanks to twin full-perimeter frames. We also set door and drawer faces into the cabinet shell to protect the contents from spills.



### WL-4244 FEATURES

**One full width "B" drawer, two half width "A" drawer, one half width "C" drawer, one "C" door base cabinet.**

Cabinet Dimensions: 42" wide, 35 1/2" high, 22" deep

#### "B" Drawer (full width)

Drawer Face Dimensions: 40 3/8" wide, 6 1/16" high, 1" thick.  
 Drawer Body Inside Dimensions: 37 7/8" w, 5" h, 19 1/2" deep.  
 Weight Capacity: 75 lbs.

#### "A" Drawer (half width)

Drawer Face Dimensions: 19 3/8" wide, 3 1/4" high, 1" thick.  
 Drawer Body Inside Dimensions: 16 7/8" w, 2" h, 19 1/2" deep.  
 Weight Capacity: 75 lbs.

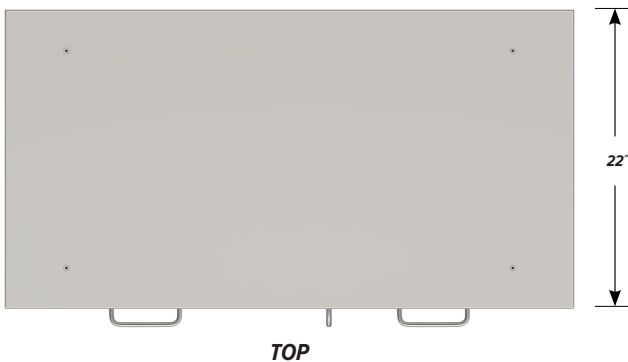
#### "C" Drawer (half width)

Drawer Face Dimensions: 19 3/8" wide, 13 1/2" high, 1" thick.  
 Drawer Body Inside Dimensions: 16 7/8" w, 9 1/2" h, 19 1/2" deep.  
 Weight Capacity: 75 lbs.

*All "C" drawers accept standard hanging files with the addition of our Hanging File Adapter Kit.*

#### "C" Door with Left Hand Pull

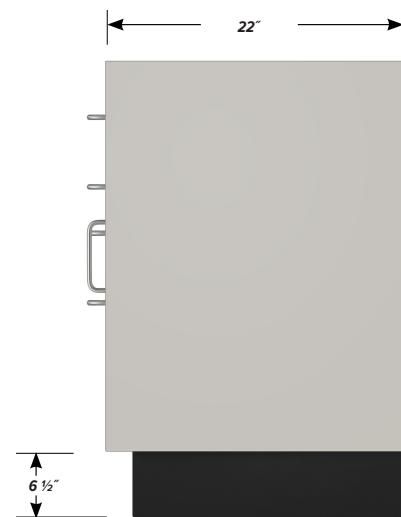
Door Face Dimensions: 19 3/8" wide, 20 3/8" high, 1" thick



TOP



FRONT



SIDE