

BENCH HIGH BASE CABINET WL-4215

Teclab builds modular cabinetry of superior strength, thanks to twin full-perimeter frames. We also set door and drawer faces into the cabinet shell to protect the contents from spills.



WL-4215 FEATURES

Two half width "A" drawer, one half width "B" drawer, three full width "B" drawer base cabinet.

Cabinet Dimensions: 42" wide, 35 1/2" high, 22" deep

"A" Drawer (half width)

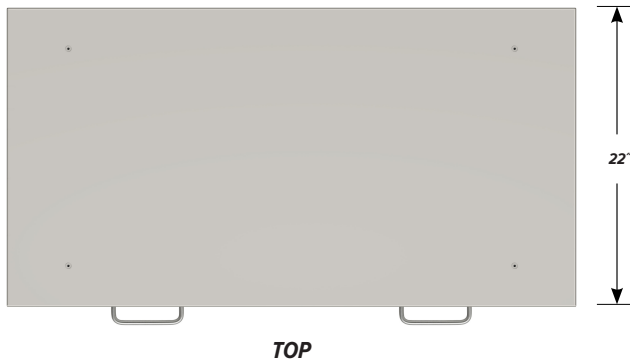
Drawer Face Dimensions: 19 3/8" wide, 3 1/4" high, 1" thick.
 Drawer Body Inside Dimensions: 16 7/8" wide, 2" high, 20" deep.
 Weight Capacity: 75 lbs.

"B" Drawer (half width)

Drawer Face Dimensions: 19 3/8" wide, 6 1/16" high, 1" thick.
 Drawer Body Inside Dimensions: 16 7/8" w, 5" h, 19 1/2" deep.
 Weight Capacity: 75 lbs.

"B" Drawer (full width)

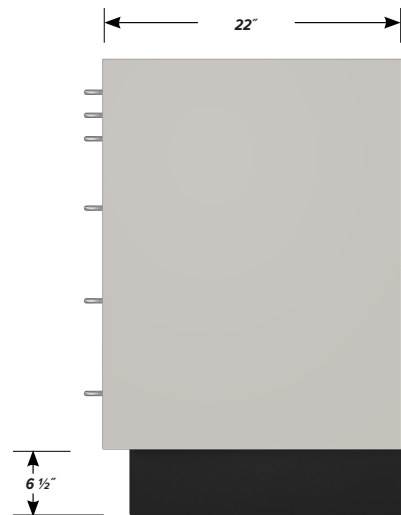
Drawer Face Dimensions: 40 3/8" wide, 6 1/16" high, 1" thick.
 Drawer Body Inside Dimensions: 37 7/8" w, 5" h, 19 1/2" deep.
 Weight Capacity: 75 lbs.



TOP



FRONT



SIDE