

BENCH HIGH BASE CABINET WL-3644

Teclab builds modular cabinetry of superior strength, thanks to twin full-perimeter frames. We also set door and drawer faces into the cabinet shell to protect the contents from spills.

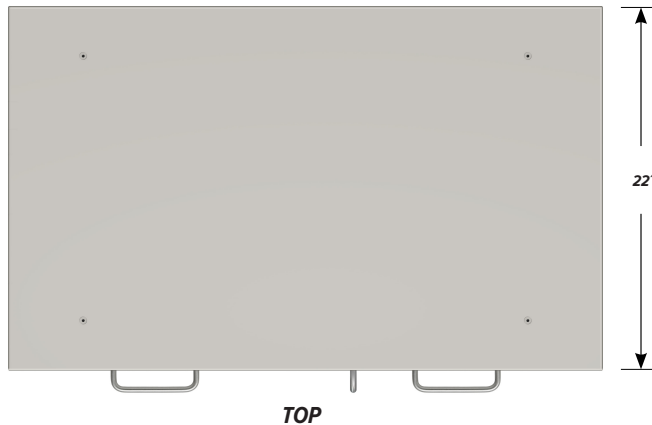


Any Base Cabinet can be made **MOBILE**.

WL-3644 FEATURES

One full width "B" drawer, one half width "B" drawer, one half width "C" drawer, one "C" door base cabinet.

Cabinet Dimensions: 36" wide, 35 1/2" high, 22" deep



TOP



FRONT

"B" Drawer (full width)

Drawer Face Dimensions: 34 3/8" w, 6 1/16" h, 1" thick.
 Drawer Body Inside Dims.: 31 7/8" w, 5" h, 19 1/2" deep.
 Weight Capacity: 75 lbs.

"B" Drawer (half width)

Drawer Face Dimensions: 16 3/8" w, 6 1/16" h, 1" thick.
 Drawer Body Inside Dims.: 13 7/8" w, 5" h, 19 1/2" deep.
 Weight Capacity: 75 lbs.

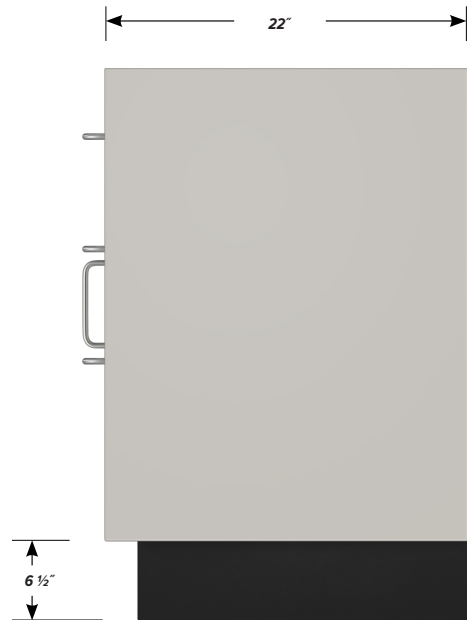
"C" Drawer (half width)

Drawer Face Dimensions: 16 3/8" w, 13 1/2" h, 1" thick.
 Drawer Body Inside Dims.: 13 7/8" w, 9 1/2" h, 19 1/2" deep.
 Weight Capacity: 75 lbs.

All "C" drawers accept standard hanging files with the addition of our Hanging File Adapter Kit.

"C" Door with Left Hand Pull

Door Face Dimensions: 16 3/8" wide, 20 3/8" high, 1" thick.



SIDE