

**BENCH HIGH BASE CABINET WL-3622**

Teclab builds modular cabinetry of superior strength, thanks to twin full-perimeter frames. We also set door and drawer faces into the cabinet shell to protect the contents from spills.



**WL-3622 FEATURES**

**Two full width "B" drawer, one full width "C" drawer base cabinet.**

Cabinet Dimensions: 36" wide, 35 1/2" high, 22" deep

**"B" Drawer (full width)**

Drawer Face Dimensions: 34 3/8" w, 6 1/16" h, 1" thick.  
 Drawer Body Inside Dims.: 31 7/8" w, 5" h, 19 1/2" deep.  
 Weight Capacity: 75 lbs.

**"C" Drawer (full width)**

Drawer Face Dimensions: 34 3/8" w, 13 1/2" h, 1" thick.  
 Drawer Body Inside Dims.: 31 7/8" w, 9 1/2" h, 19 1/2" deep.  
 Weight Capacity: 75 lbs.

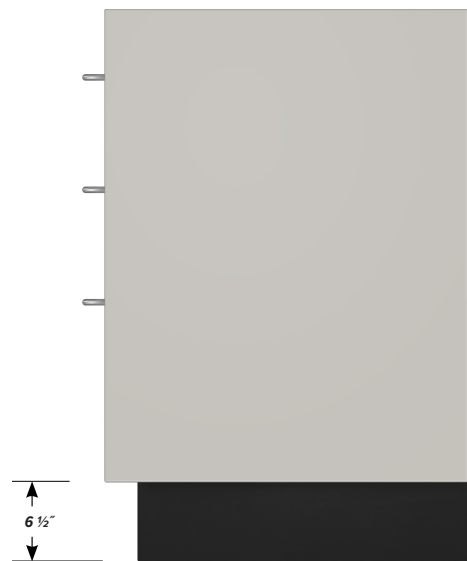
*All "C" drawers accept standard hanging files with the addition of our Hanging File Adapter Kit.*



**TOP**



**FRONT**



**SIDE**