

**BENCH HIGH BASE CABINET WL-2416**

Teclab builds modular cabinetry of superior strength, thanks to twin full-perimeter frames. We also set door and drawer faces into the cabinet shell to protect the contents from spills.



**WL-2416 FEATURES**

**Two "B" drawer, one "C" drawer base cabinet.**

Cabinet Dimensions: 24" wide, 35 1/2" high, 22" deep

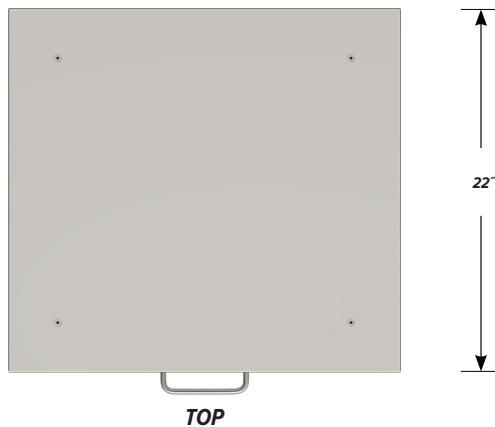
**"B" Drawer**

Drawer Face Dimensions: 22 3/8" wide, 6 1/16" high, 1" thick.  
 Drawer Body Inside Dimensions: 19 7/8" w, 5" h, 19 1/2" deep.  
 Weight Capacity: 75 lbs.

**"C" Drawer**

Drawer Face Dimensions: 22 3/8" wide, 13 1/2" high, 1" thick.  
 Drawer Body Inside Dimensions: 19 7/8" w, 9 1/2" h, 19 1/2" deep.  
 Weight Capacity: 75 lbs.

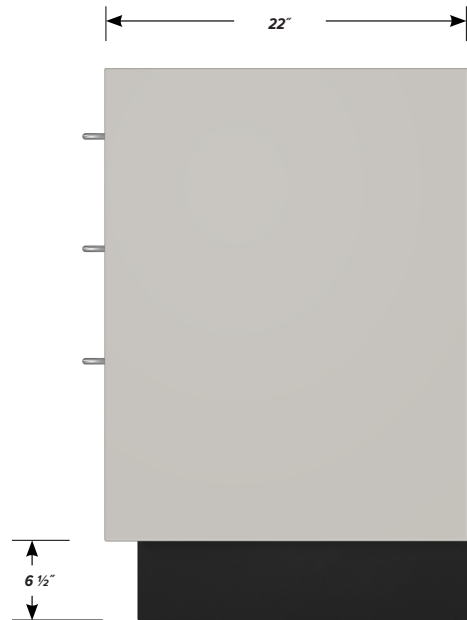
*All "C" drawers accept standard hanging files with the addition of our Hanging File Adapter Kit.*



**TOP**



**FRONT**



**SIDE**