

BENCH HIGH BASE CABINET WL-2415

Teclab builds modular cabinetry of superior strength, thanks to twin full-perimeter frames. We also set door and drawer faces into the cabinet shell to protect the contents from spills.



WL-2415 FEATURES

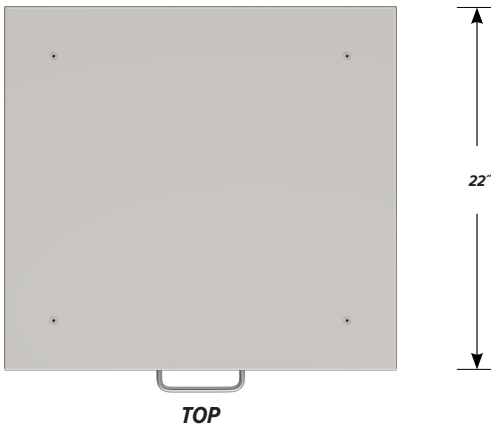
Two "C" drawer base cabinet.

Cabinet Dimensions: 24" wide, 35 1/2" high, 22" deep

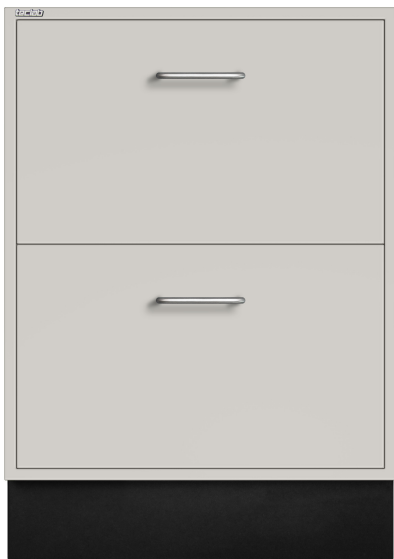
"C" Drawer

Drawer Face Dimensions: 22 3/8" wide, 13 1/2" high, 1" thick.
 Drawer Body Inside Dimensions: 19 7/8" w, 9 1/2" h, 19 1/2" deep.
 Weight Capacity: 75 lbs.

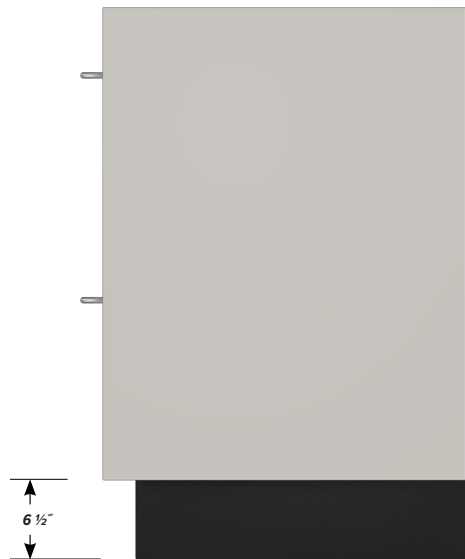
All "C" drawers accept standard hanging files with the addition of our Hanging File Adapter Kit.



TOP



FRONT



SIDE

