

DESK HIGH BASE CABINET DL-3602

Teclab builds modular cabinetry of superior strength, thanks to twin full-perimeter frames. We also set door and drawer faces into the cabinet shell to protect the contents from spills.



DL-3602 FEATURES

One "A" drawer, two "C" door base cabinet.

Cabinet Dimensions: 36" wide, 28" high, 22" deep

"A" Drawer

Drawer Face Dimensions: 34 3/8" wide, 3 1/4" high, 1" thick.
 Drawer Body Inside Dims.: 31 7/8" w, 2" h, 19 1/2" deep.
 Weight Capacity: 75 lbs.

Top "A" drawer can be replaced with a writing surface.

"C" Door

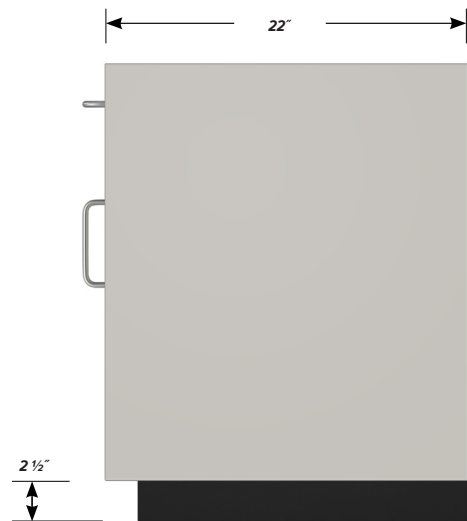
Door Face Dimensions: 17 1/4" wide, 20 3/8" high, 1" thick.



TOP



FRONT



SIDE