

DESK HIGH BASE CABINET DL-3601

Teclab builds modular cabinetry of superior strength, thanks to twin full-perimeter frames. We also set door and drawer faces into the cabinet shell to protect the contents from spills.



DL-3601 FEATURES

Two "E" door base cabinet.

Cabinet Dimensions: 36" wide, 28" high, 22" deep

"E" Door

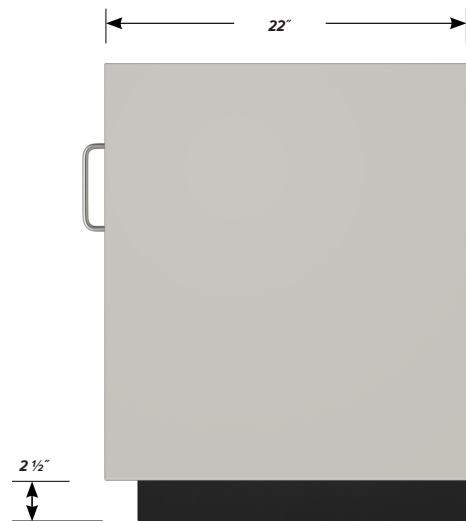
Door Face Dimensions: 17 1/4" wide, 23 3/4" high, 1" thick.



TOP



FRONT



SIDE