

**DESK HIGH BASE CABINET DL-2417**

Teclab builds modular cabinetry of superior strength, thanks to twin full-perimeter frames. We also set door and drawer faces into the cabinet shell to protect the contents from spills.



**DL-2417 FEATURES**

**Open base cabinet with four sliding shelves.**

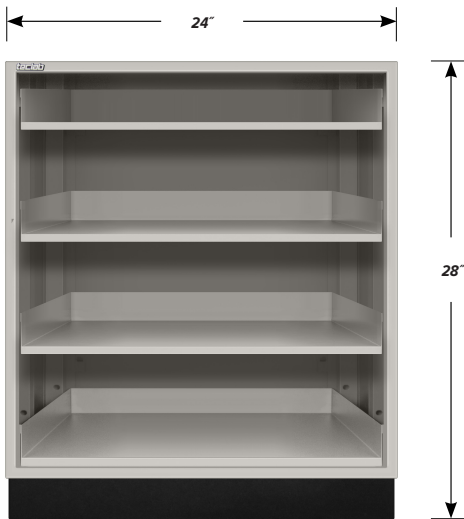
Cabinet Dimensions: 24" wide, 28" high, 22" deep

**Sliding Shelf**

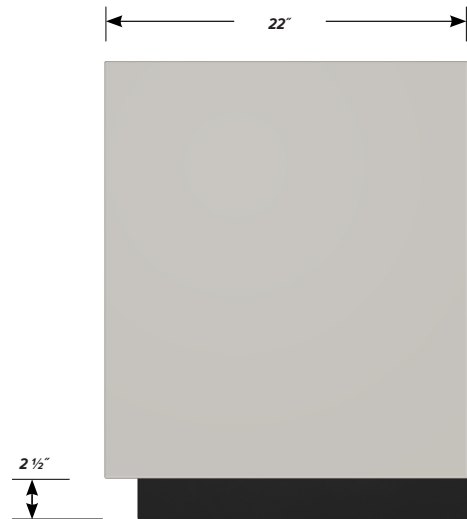
Dimensions: 19 7/8" wide, 2" high, 19 1/2" deep.  
Weight Capacity: 75 lbs.



**TOP**



**FRONT**



**SIDE**