

**DESK HIGH BASE CABINET DL-2402**

Teclab builds modular cabinetry of superior strength, thanks to twin full-perimeter frames. We also set door and drawer faces into the cabinet shell to protect the contents from spills.



**DL-2402 FEATURES**

**One "E" door with LH pull base cabinet.**

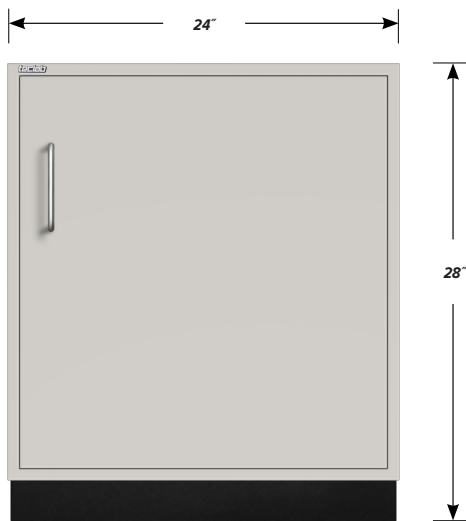
Cabinet Dimensions: 24" wide, 28" high, 22" deep

**"E" Door with Left Hand Pull**

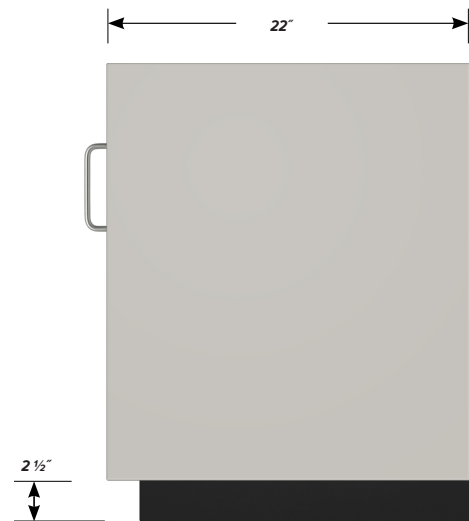
Door Face Dimensions: 22 3/8" wide, 23 3/4" high, 1" thick.



**TOP**



**FRONT**



**SIDE**