

DESK HIGH BASE CABINET DL-1817

Teclab builds modular cabinetry of superior strength, thanks to twin full-perimeter frames. We also set door and drawer faces into the cabinet shell to protect the contents from spills.



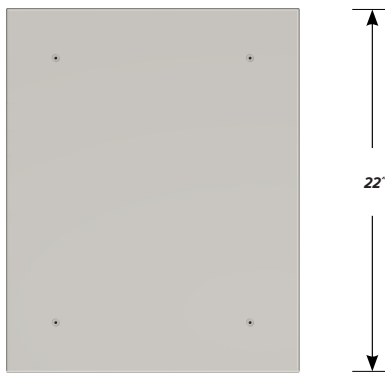
DL-1817 FEATURES

Open base cabinet with four sliding shelves.

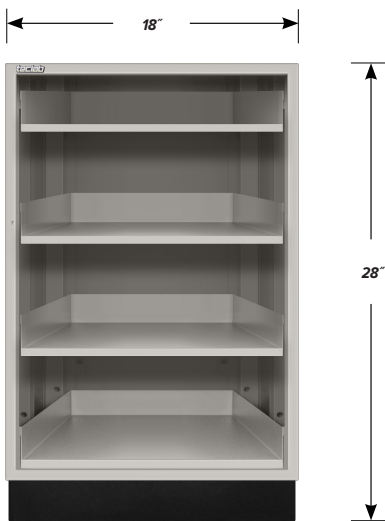
Cabinet Dimensions: 18" wide, 28" high, 22" deep

Sliding Shelf

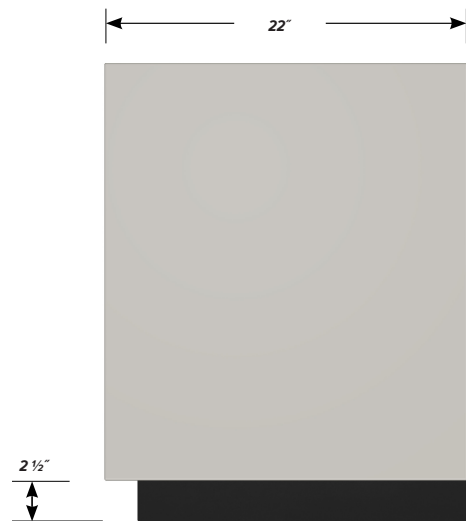
Dimensions: 13 7/8" wide, 2" high, 19 1/2" deep.
Weight Capacity: 75 lbs.



TOP



FRONT



SIDE