

**DESK HIGH BASE CABINET DL-1803**

Teclab builds modular cabinetry of superior strength, thanks to twin full-perimeter frames. We also set door and drawer faces into the cabinet shell to protect the contents from spills.



**DL-1803 FEATURES**

**One "A" drawer, one "C" door with RH pull base cabinet.**

Cabinet Dimensions: 18" wide, 28" high, 22" deep

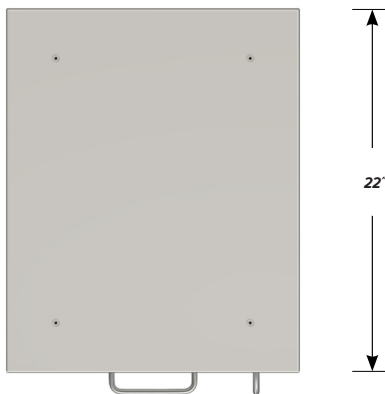
**"A" Drawer**

Drawer Face Dimensions: 16 3/8" wide, 3 1/4" high, 1" thick.  
 Drawer Body Inside Dims.: 13 7/8" wide, 2" high, 19 1/2" deep.  
 Weight Capacity: 75 lbs.

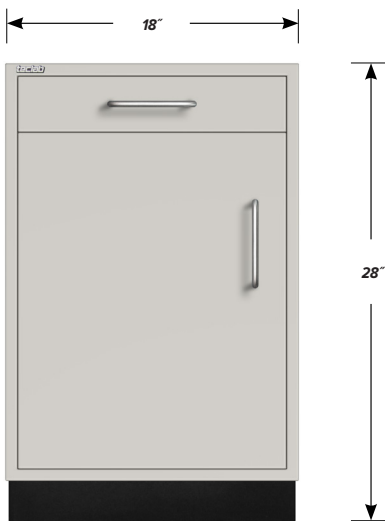
*Top "A" drawer can be replaced with a writing surface.*

**"C" Door with Right Hand Pull**

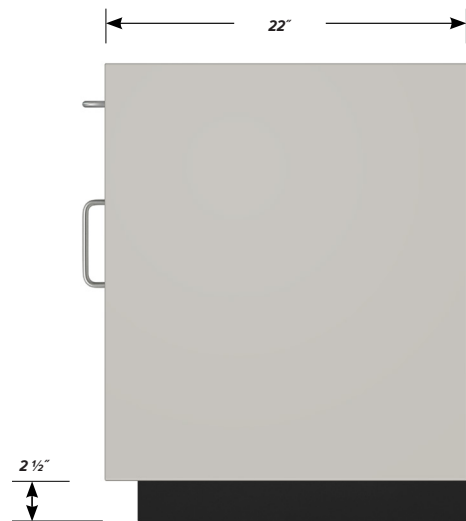
Door Face Dimensions: 16 3/8" wide, 20 3/8" high, 1" thick.



**TOP**



**FRONT**



**SIDE**