

DESK HIGH BASE CABINET DL-1801

Teclab builds modular cabinetry of superior strength, thanks to twin full-perimeter frames. We also set door and drawer faces into the cabinet shell to protect the contents from spills.



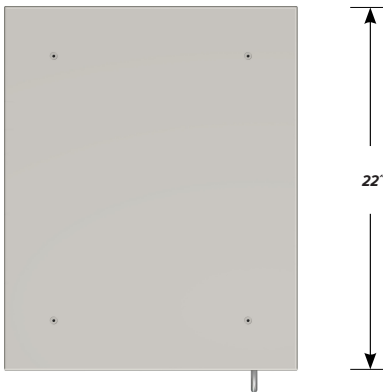
DL-1801 FEATURES

One "E" door with RH pull base cabinet.

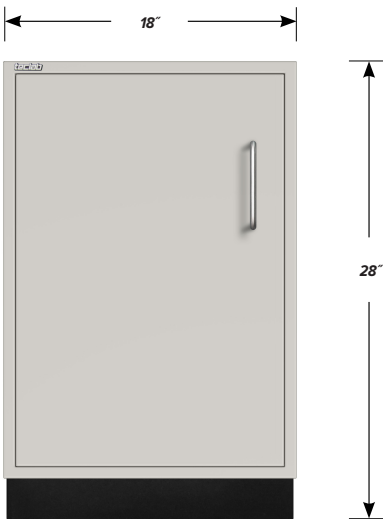
Cabinet Dimensions: 18" wide, 28" high, 22" deep

"E" Door with Right Hand Pull

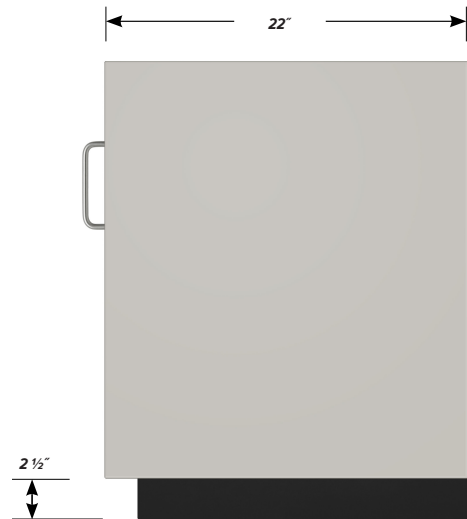
Door Face Dimensions: 16 3/8" wide, 23 3/4" high, 1" thick.



TOP



FRONT



SIDE