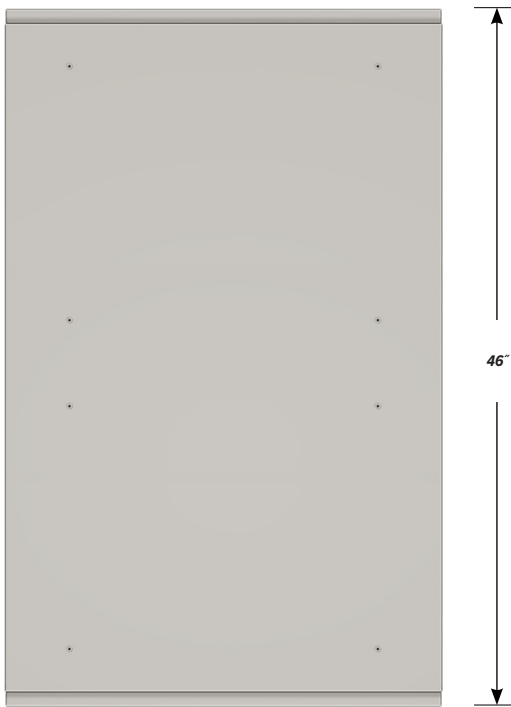


## DOUBLE SIDED BASE CABINET DC-3012-48

Teclab Base Cabinets are constructed of only top quality, heavy-duty, furniture-grade, cold-rolled steel, double-braced and welded at all critical joints; twin full-perimeter frames formed of heavy gauge steel, welded to provide strength and rigidity; heavy-duty drawers that glide effortlessly on precision steel ball bearings; cabinet doors that open and close with authority and precision using self-closing hinges; brushed aluminum pulls that are recessed for clean lines and unobtrusive operation; durable, textured paint finish, in a wide selection of mar-resistant, easy-to-clean colors.



**TOP**

### DC-3012-48 FEATURES

**Two "B" drawers and one "C" drawer on each side.**

Cabinet Dimensions: 30" wide, 33 3/4" high, 46" deep

#### "B" Drawer

Drawer Face Dimensions: 30" wide, 6 1/16" high, 1" thick.  
 Drawer Body Inside Dims.: 27" wide, 5" high, 19 1/2" deep.  
 Weight Capacity: 75 lbs.

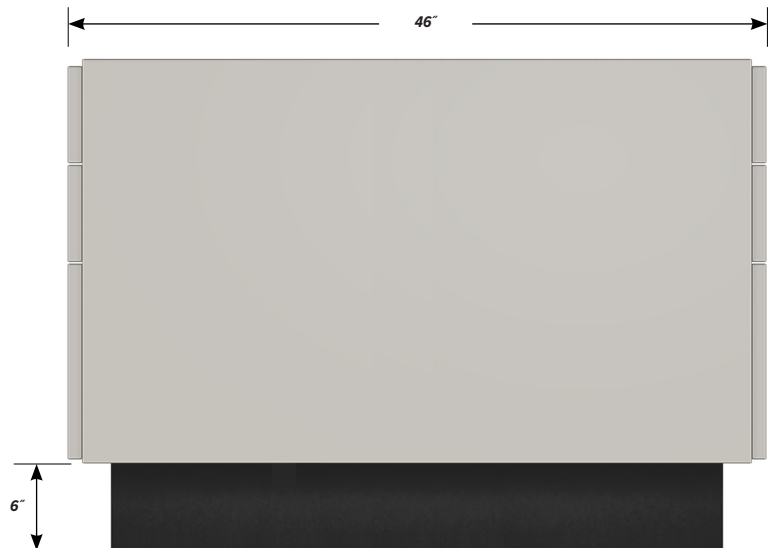
#### "C" Drawer

Drawer Face Dimensions: 30" wide, 13 1/2" high, 1" thick.  
 Drawer Body Inside Dims.: 27" wide, 9 1/2" high, 19 1/2" deep.  
 Weight Capacity: 75 lbs.

*All "C" drawers accept standard hanging files with cabinet accessory HFK-30.*



**FRONT**



**SIDE**

PD - DC-3012-48 - v.1.3