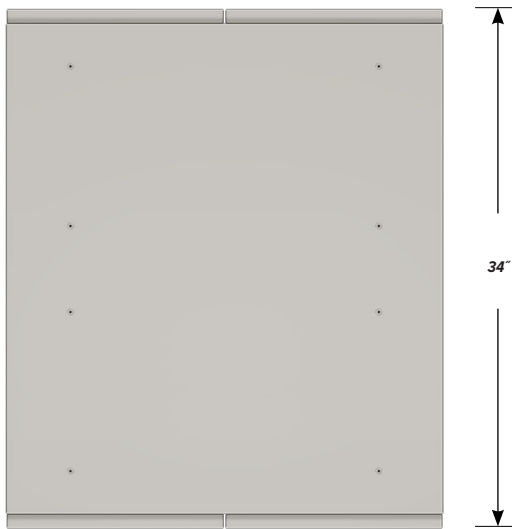


DOUBLE SIDED BASE CABINET DC-3001-36

Teclab Base Cabinets are constructed of only top quality, heavy-duty, furniture-grade, cold-rolled steel, double-braced and welded at all critical joints; twin full-perimeter frames formed of heavy gauge steel, welded to provide strength and rigidity; heavy-duty drawers that glide effortlessly on precision steel ball bearings; cabinet doors that open and close with authority and precision using self-closing hinges; brushed aluminum pulls that are recessed for clean lines and unobtrusive operation; durable, textured paint finish, in a wide selection of mar-resistant, easy-to-clean colors.



TOP

DC-3001-36 FEATURES

Double "D" doors with sliding bottom tray on each side.
 Cabinet Dimensions: 30" wide, 33 3/4" high, 34" deep

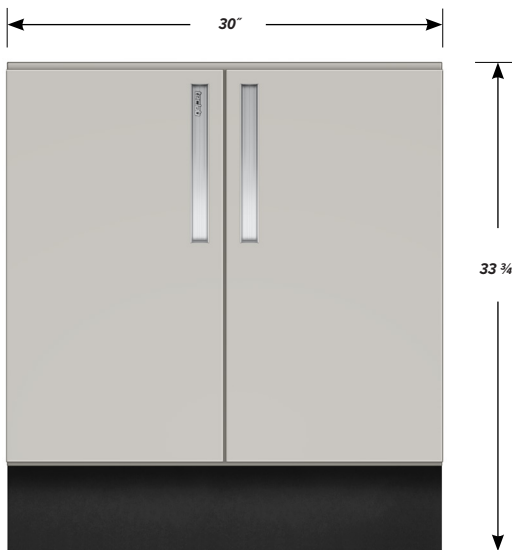
"D" Doors

Door Face Dimensions: 15" wide, 27 3/16" high, 1" thick.

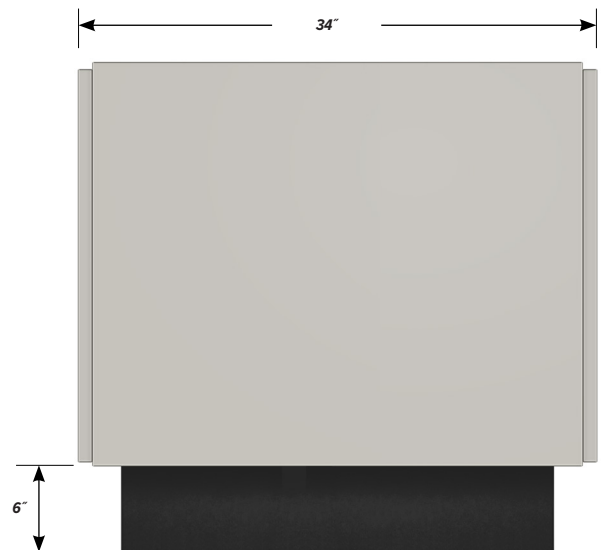
Sliding Tray

Dimensions: 27" wide, 2" high, 17 1/2" deep.

Weight Capacity: 75 lbs.



FRONT



SIDE