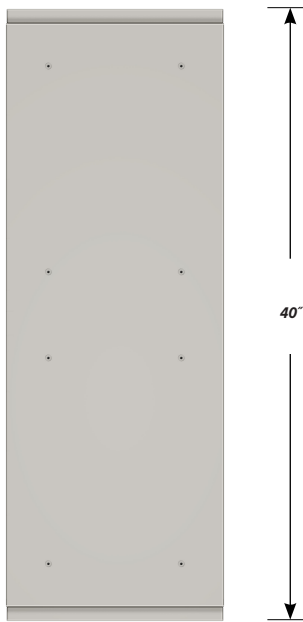


DOUBLE SIDED BASE CABINET DC-1532-42

Teclab Base Cabinets are constructed of only top quality, heavy-duty, furniture-grade, cold-rolled steel, double-braced and welded at all critical joints; twin full-perimeter frames formed of heavy gauge steel, welded to provide strength and rigidity; heavy-duty drawers that glide effortlessly on precision steel ball bearings; cabinet doors that open and close with authority and precision using self-closing hinges; brushed aluminum pulls that are recessed for clean lines and unobtrusive operation; durable, textured paint finish, in a wide selection of mar-resistant, easy-to-clean colors.



TOP

DC-1532-42 FEATURES

Two "A" drawers, one "B" drawer and one "C" drawer on each side.

Cabinet Dimensions: 15" wide, 33 ¾" high, 40" deep

"A" Drawer

Drawer Face Dimensions: 15" wide, 3 ¼" high, 1" thick.

Drawer Body Inside Dims.: 12" wide, 2" high, 17 ½" deep.

Weight Capacity: 75 lbs.

Top "A" drawer can be replaced with a writing surface.

"B" Drawer

Drawer Face Dimensions: 15" wide, 6 11/16" high, 1" thick.

Drawer Body Inside Dims.: 12" wide, 5" high, 17 ½" deep.

Weight Capacity: 75 lbs.

"C" Drawer

Drawer Face Dimensions: 15" wide, 13 ½" high, 1" thick.

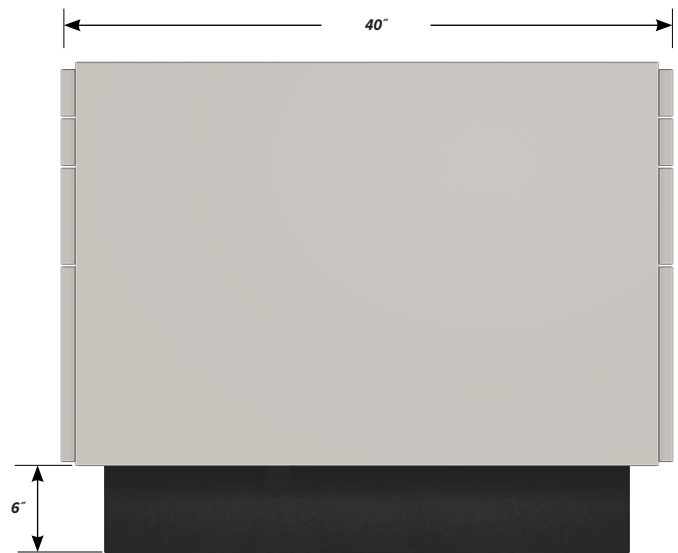
Drawer Body Inside Dims.: 12" wide, 9 ½" high, 17 ½" deep.

Weight Capacity: 75 lbs.

All 15" wide "C" drawers accept standard hanging files.



FRONT



SIDE