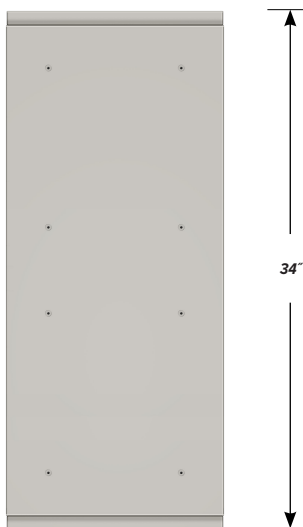


## DOUBLE SIDED BASE CABINET DC-1506-36

Teclab Base Cabinets are constructed of only top quality, heavy-duty, furniture-grade, cold-rolled steel, double-braced and welded at all critical joints; twin full-perimeter frames formed of heavy gauge steel, welded to provide strength and rigidity; heavy-duty drawers that glide effortlessly on precision steel ball bearings; cabinet doors that open and close with authority and precision using self-closing hinges; brushed aluminum pulls that are recessed for clean lines and unobtrusive operation; durable, textured paint finish, in a wide selection of mar-resistant, easy-to-clean colors.



TOP

### DC-1506-36 FEATURES

**One "A" door with LH pull and sliding bottom tray and one "C" drawer on each side.**

Cabinet Dimensions: 15" wide, 33 3/4" high, 34" deep

#### "A" Doors

Door Face Dimensions: 15" wide, 13 1/2" high, 1" thick.

#### Sliding Tray

Dimensions: 12" wide, 2" high, 17 1/2" deep.

Weight Capacity: 75 lbs.

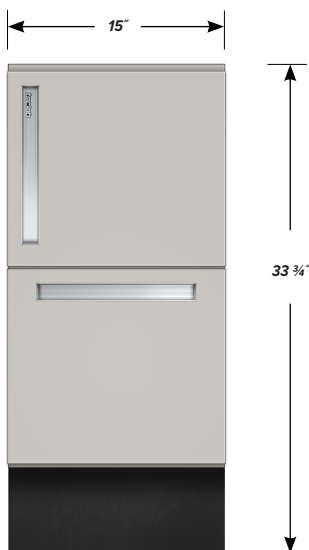
#### "C" Drawer

Drawer Face Dimensions: 15" wide, 13 1/2" high, 1" thick.

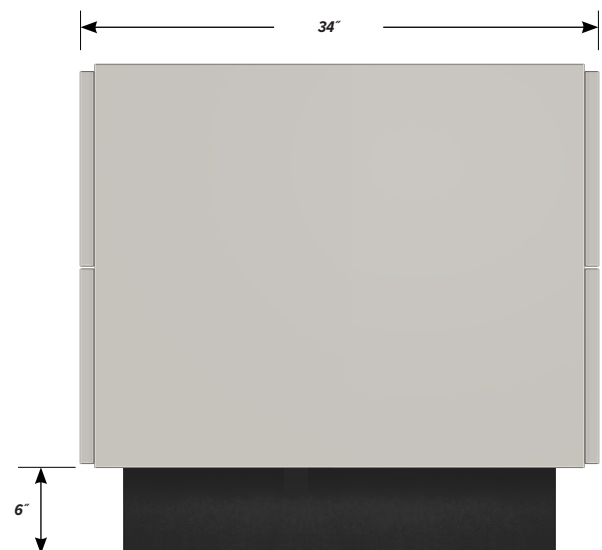
Drawer Body Inside Dims.: 12" wide, 2" high, 17 1/2" deep.

Weight Capacity: 75 lbs.

*All 15" wide "C" drawers accept standard hanging files.*



FRONT



SIDE