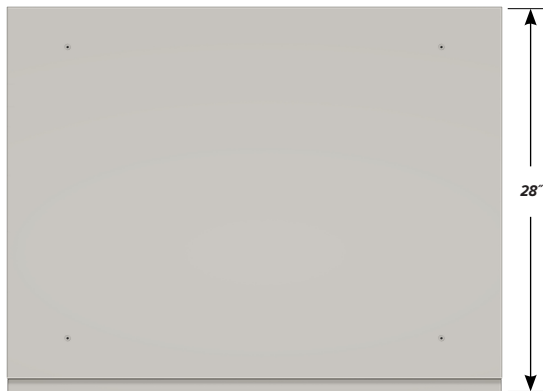


BENCH HIGH BASE CABINET C-3607

Teclab Base Cabinets are constructed of only top quality, heavy-duty, furniture-grade, cold-rolled steel, double-braced and welded at all critical joints; twin full-perimeter frames formed of heavy gauge steel, welded to provide strength and rigidity; heavy-duty drawers that glide effortlessly on precision steel ball bearings; cabinet doors that open and close with authority and precision using self-closing hinges; brushed aluminum pulls that are recessed for clean lines and unobtrusive operation; durable, textured paint finish, in a wide selection of mar-resistant, easy-to-clean colors.



TOP

C-3607 FEATURES

Two "A" drawer, one "B" drawer, one "C" drawer base cabinet.

Cabinet Dimensions: 36" wide, 33 3/4" high, 28" deep.

"A" Drawer

Drawer Face Dimensions: 36" wide, 3 1/4" high, 1" thick.
 Drawer Body Inside Dims.: 33" wide, 2" high, 25 1/2" deep.
 Weight Capacity: 75 lbs.

Top "A" drawer can be replaced with a writing surface.

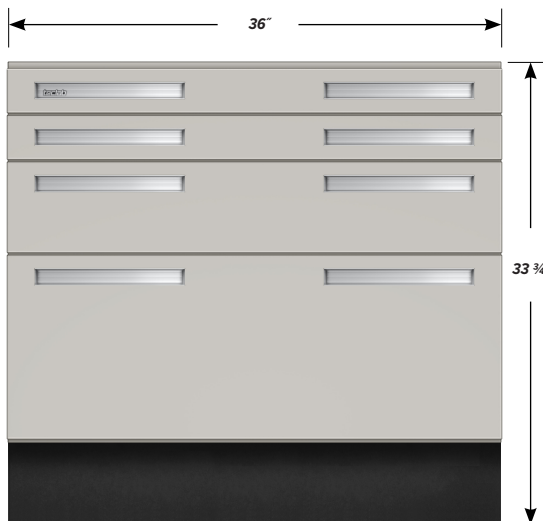
"B" Drawer

Drawer Face Dimensions: 36" wide, 6 1/16" high, 1" thick.
 Drawer Body Inside Dims.: 33" wide, 5" high, 25 1/2" deep.
 Weight Capacity: 75 lbs.

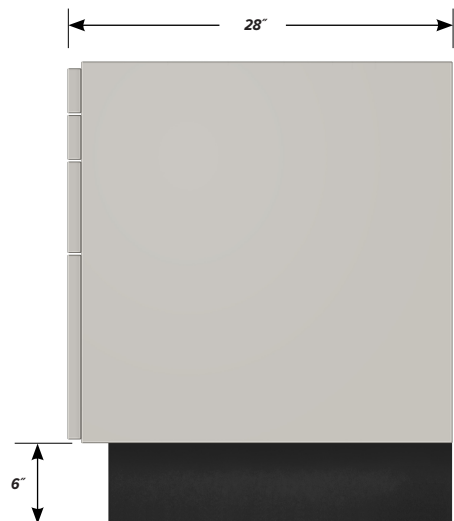
"C" Drawer

Drawer Face Dimensions: 36" wide, 13 1/2" high, 1" thick.
 Drawer Body Inside Dims.: 33" wide, 9 1/2" high, 25 1/2" deep.
 Weight Capacity: 75 lbs.

All "C" drawers accept standard hanging files with cabinet accessory HFK-36.



FRONT



SIDE