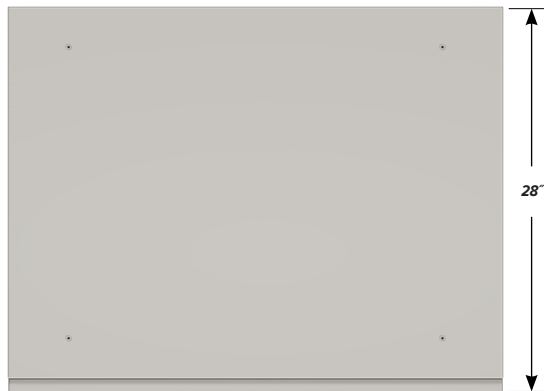


## BENCH HIGH BASE CABINET C-3603

Teclab Base Cabinets are constructed of only top quality, heavy-duty, furniture-grade, cold-rolled steel, double-braced and welded at all critical joints; twin full-perimeter frames formed of heavy gauge steel, welded to provide strength and rigidity; heavy-duty drawers that glide effortlessly on precision steel ball bearings; cabinet doors that open and close with authority and precision using self-closing hinges; brushed aluminum pulls that are recessed for clean lines and unobtrusive operation; durable, textured paint finish, in a wide selection of mar-resistant, easy-to-clean colors.

Any Base Cabinet can be made **MOBILE**.



TOP

### C-3603 FEATURES

**Two "A" drawer, double "C" door base cabinet with sliding bottom tray.**

Cabinet Dimensions: 36" wide, 33 ¾" high, 28" deep.

#### "A" Drawer

Drawer Face Dimensions: 36" wide, 3 ¼" high, 1" thick.

Drawer Body Inside Dims.: 33" wide, 2" high, 25 ½" deep.

Weight Capacity: 75 lbs.

*Top "A" drawer can be replaced with a writing surface.*

#### "C" Doors

Door Face Dimensions: 18" wide, 20 ¾" high, 1" thick.

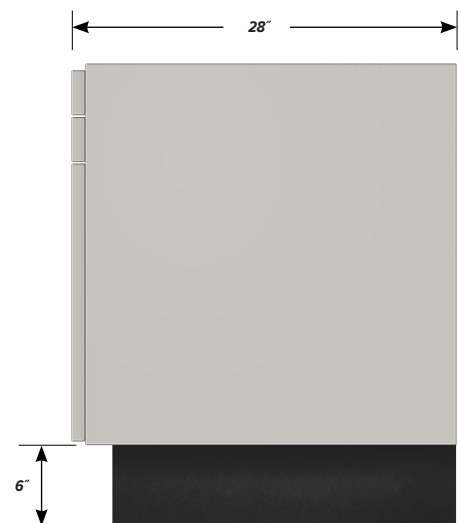
#### Sliding Tray

Dimensions: 33" wide, 2" high, 25 ½" deep.

Weight Capacity: 75 lbs.



FRONT



SIDE