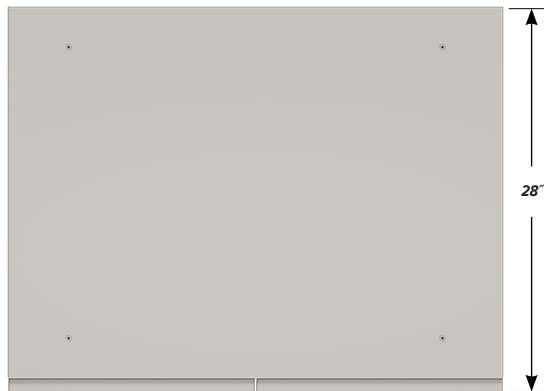


BENCH HIGH BASE CABINET C-3601

Teclab Base Cabinets are constructed of only top quality, heavy-duty, furniture-grade, cold-rolled steel, double-braced and welded at all critical joints; twin full-perimeter frames formed of heavy gauge steel, welded to provide strength and rigidity; heavy-duty drawers that glide effortlessly on precision steel ball bearings; cabinet doors that open and close with authority and precision using self-closing hinges; brushed aluminum pulls that are recessed for clean lines and unobtrusive operation; durable, textured paint finish, in a wide selection of mar-resistant, easy-to-clean colors.

Any Base Cabinet can be made **MOBILE**.



TOP

C-3601 FEATURES

Double "D" door base cabinet with sliding bottom tray.
Cabinet Dimensions: 36" wide, 33 ¾" high, 28" deep.

"D" Doors

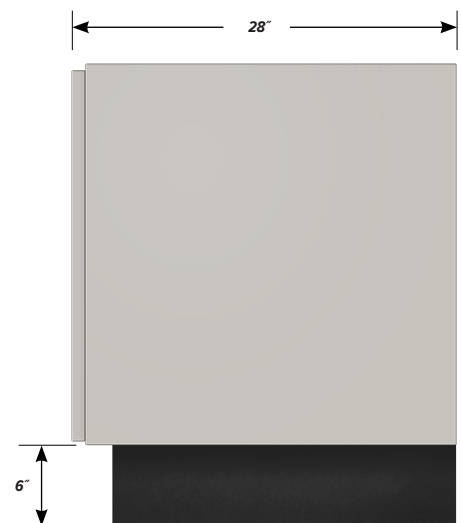
Door Face Dimensions: 18" wide, 27 ¾" high, 1" thick.

Sliding Tray

Dimensions: 33" wide, 2" high, 25 ½" deep.
Weight Capacity: 75 lbs.



FRONT



SIDE