

**BENCH HIGH BASE CABINET C-3017**

Teclab Base Cabinets are constructed of only top quality, heavy-duty, furniture-grade, cold-rolled steel, double-braced and welded at all critical joints; twin full-perimeter frames formed of heavy gauge steel, welded to provide strength and rigidity; heavy-duty drawers that glide effortlessly on precision steel ball bearings; cabinet doors that open and close with authority and precision using self-closing hinges; brushed aluminum pulls that are recessed for clean lines and unobtrusive operation; durable, textured paint finish, in a wide selection of mar-resistant, easy-to-clean colors.



**TOP**

**C-3017 FEATURES**

**Two "A" drawer, three "B" drawer base cabinet.**  
Cabinet Dimensions: 30" wide, 33 ¾" high, 28" deep.

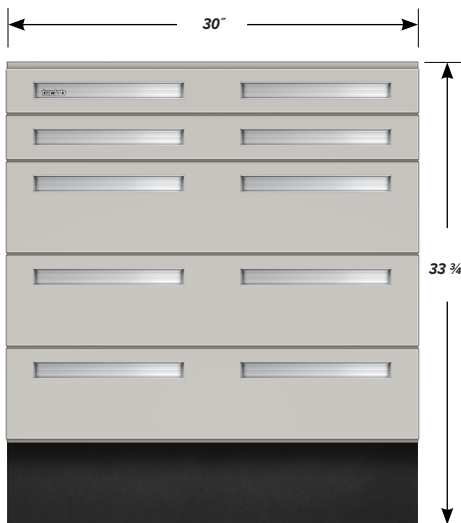
**"A" Drawer**

Drawer Face Dimensions: 30" wide, 3 ¼" high, 1" thick.  
Drawer Body Inside Dims.: 27" wide, 2" high, 25 ½" deep.  
Weight Capacity: 75 lbs.

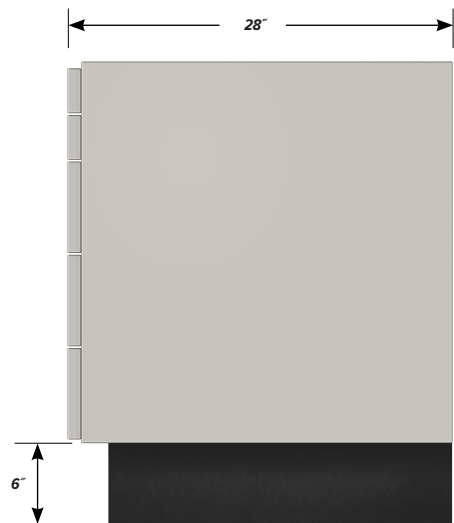
*Top "A" drawer can be replaced with a writing surface.*

**"B" Drawer**

Drawer Face Dimensions: 30" wide, 6 1/16" high, 1" thick.  
Drawer Body Inside Dims.: 27" wide, 5" high, 25 ½" deep.  
Weight Capacity: 75 lbs.



**FRONT**



**SIDE**