

## BENCH HIGH BASE CABINET C-3011

Teclab Base Cabinets are constructed of only top quality, heavy-duty, furniture-grade, cold-rolled steel, double-braced and welded at all critical joints; twin full-perimeter frames formed of heavy gauge steel, welded to provide strength and rigidity; heavy-duty drawers that glide effortlessly on precision steel ball bearings; cabinet doors that open and close with authority and precision using self-closing hinges; brushed aluminum pulls that are recessed for clean lines and unobtrusive operation; durable, textured paint finish, in a wide selection of mar-resistant, easy-to-clean colors.

Any Base Cabinet can be made **MOBILE**.



**TOP**

### C-3011 FEATURES

**Double "A" door, one "C" drawer base cabinet with sliding bottom tray.**

Cabinet Dimensions: 30" wide, 33 ¾" high, 28" deep.

#### "A" Doors

Door Face Dimensions: 14 ⅜" wide, 13 ½" high, 1" thick.

#### Sliding Tray

Dimensions: 27" wide, 2" high, 25 ½" deep.

Weight Capacity: 75 lbs.

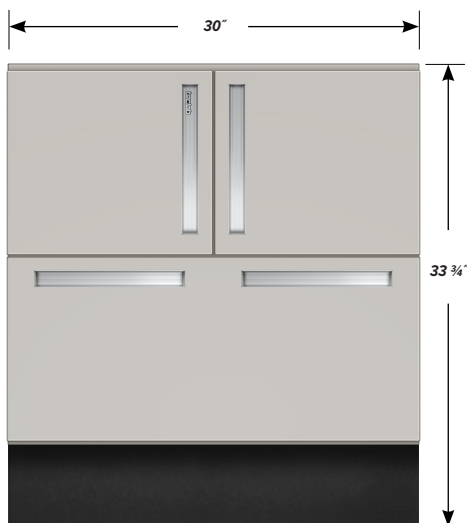
#### "C" Drawer

Drawer Face Dimensions: 30" wide, 13 ½" high, 1" thick.

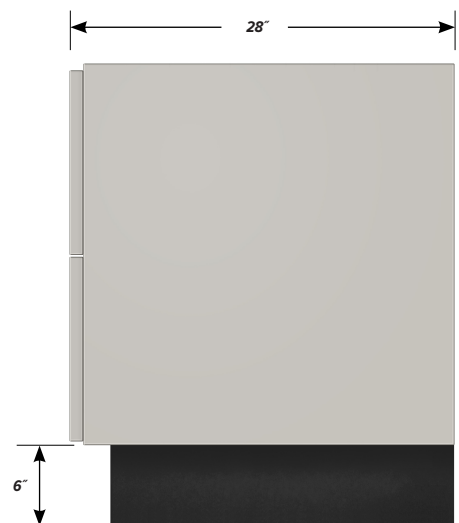
Drawer Body Inside Dims.: 27" wide, 9 ½" high, 25 ½" deep.

Weight Capacity: 75 lbs.

*All "C" drawers accept standard hanging files with cabinet accessory HFK-30.*



**FRONT**



**SIDE**