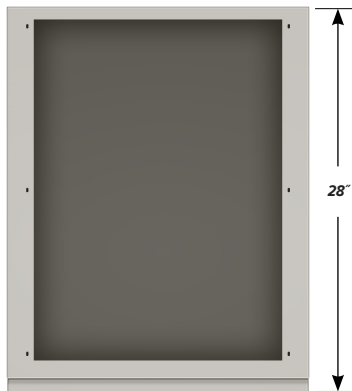


## BENCH HIGH SINK CABINET C-2227

Teclab Base Cabinets are constructed of only top quality, heavy-duty, furniture-grade, cold-rolled steel, double-braced and welded at all critical joints; twin full-perimeter frames formed of heavy gauge steel, welded to provide strength and rigidity; heavy-duty drawers that glide effortlessly on precision steel ball bearings; cabinet doors that open and close with authority and precision using self-closing hinges; brushed aluminum pulls that are recessed for clean lines and unobtrusive operation; durable, textured paint finish, in a wide selection of mar-resistant, easy-to-clean colors.



TOP

### C-2227 FEATURES

**Top "B" panel and bottom "C" door base cabinet with LH pull and sliding bottom tray.**

Cabinet Dimensions: 22" wide, 33 3/4" high, 28" deep.

#### "B" Panel

Dimensions: 22" wide, 6 1/16" high, 1" thick.

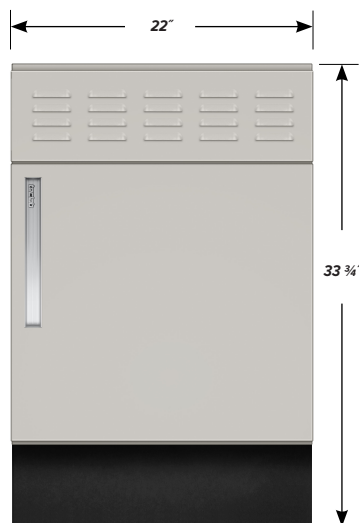
#### "C" Door with Left Hand Pull

Door Face Dimensions: 22" wide, 20 3/8" high, 1" thick.

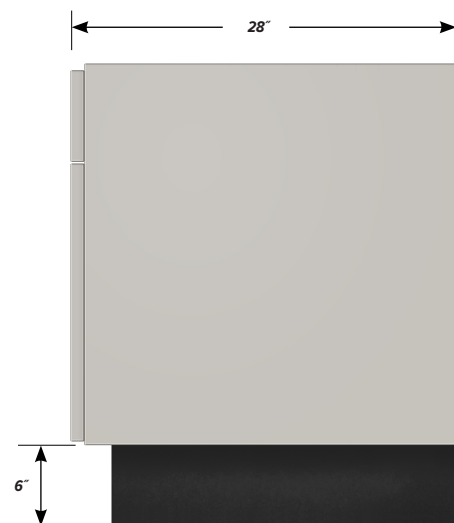
#### Sliding Tray

Dimensions: 19" wide, 2" high, 25 1/2" deep.

Weight Capacity: 75 lbs.



FRONT



SIDE