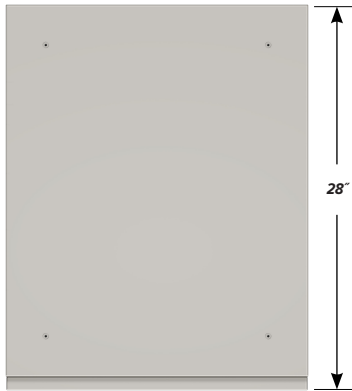


BENCH HIGH BASE CABINET C-2213

Teclab Base Cabinets are constructed of only top quality, heavy-duty, furniture-grade, cold-rolled steel, double-braced and welded at all critical joints; twin full-perimeter frames formed of heavy gauge steel, welded to provide strength and rigidity; heavy-duty drawers that glide effortlessly on precision steel ball bearings; cabinet doors that open and close with authority and precision using self-closing hinges; brushed aluminum pulls that are recessed for clean lines and unobtrusive operation; durable, textured paint finish, in a wide selection of mar-resistant, easy-to-clean colors.



TOP

C-2213 FEATURES

Top "C" drawer, double "A" door base cabinet with sliding bottom tray.

Cabinet Dimensions: 22" wide, 33 3/4" high, 28" deep.

"C" Drawer

Drawer Face Dimensions: 22" wide, 13 1/2" high, 1" thick.
 Drawer Body Inside Dims.: 19" wide, 9 1/2" high, 25 1/2" deep.
 Weight Capacity: 75 lbs.

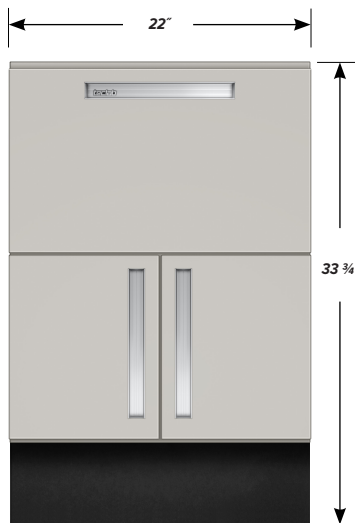
All "C" drawers accept standard hanging files with cabinet accessory HFK-22.

"A" Doors

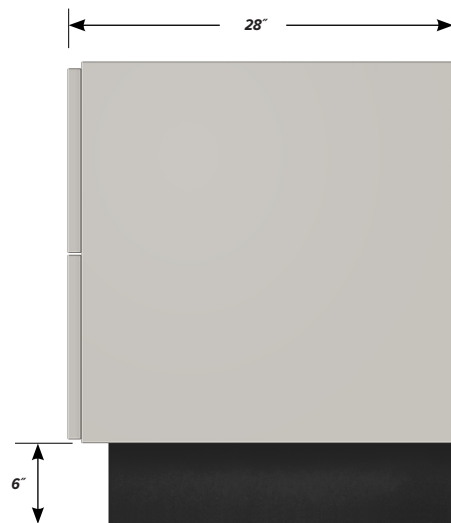
Door Face Dimensions: 11" wide, 13 1/2" high, 1" thick.

Sliding Tray

Dimensions: 19" wide, 2" high, 25 1/2" deep.
 Weight Capacity: 75 lbs.



FRONT



SIDE