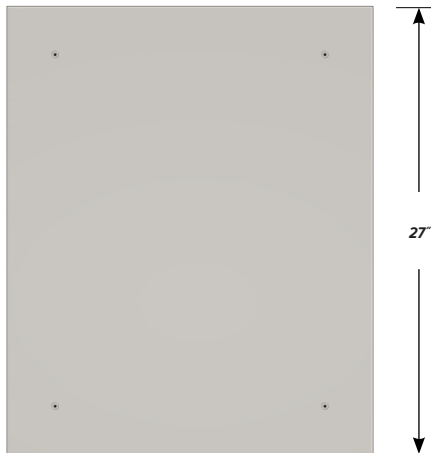


DESK HIGH BASE CABINET C-2117

Teclab Base Cabinets are constructed of only top quality, heavy-duty, furniture-grade, cold-rolled steel, double-braced and welded at all critical joints; twin full-perimeter frames formed of heavy gauge steel, welded to provide strength and rigidity; heavy-duty drawers that glide effortlessly on precision steel ball bearings; cabinet doors that open and close with authority and precision using self-closing hinges; brushed aluminum pulls that are recessed for clean lines and unobtrusive operation; durable, textured paint finish, in a wide selection of mar-resistant, easy-to-clean colors.

Any Base Cabinet can be made **MOBILE**.

Height of a Desk High cabinet will increase by 2 ¾".



TOP

C-2117 FEATURES

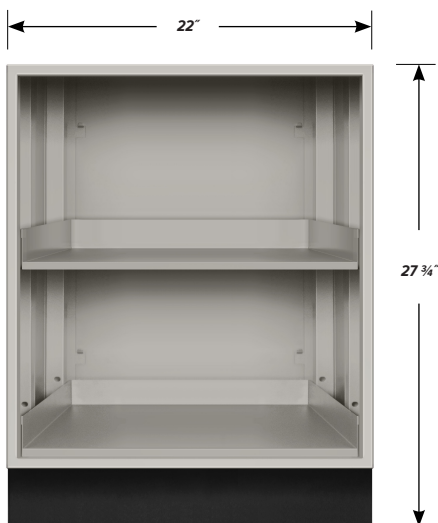
Open base cabinet with two sliding trays.

Cabinet Dimensions: 22" wide, 27 ¾" high, 27" deep.

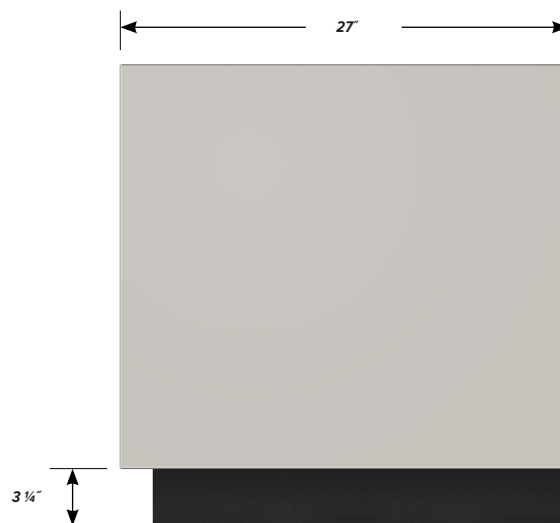
Sliding Tray

Dimensions: 19" wide, 2" high, 25 ½" deep.

Weight Capacity: 75 lbs.



FRONT



SIDE