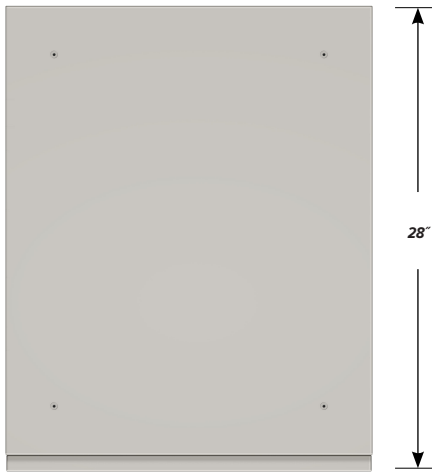


DESK HIGH BASE CABINET C-2109

Teclab Base Cabinets are constructed of only top quality, heavy-duty, furniture-grade, cold-rolled steel, double-braced and welded at all critical joints; twin full-perimeter frames formed of heavy gauge steel, welded to provide strength and rigidity; heavy-duty drawers that glide effortlessly on precision steel ball bearings; cabinet doors that open and close with authority and precision using self-closing hinges; brushed aluminum pulls that are recessed for clean lines and unobtrusive operation; durable, textured paint finish, in a wide selection of mar-resistant, easy-to-clean colors.

Any Base Cabinet can be made **MOBILE**.
Height of a Desk High cabinet will increase by 2 ¾".

TOP

C-2109 FEATURES

One "A" drawer, one "B" drawer, double "A" door base cabinet with sliding bottom tray.
Cabinet Dimensions: 22" wide, 27 ¾" high, 28" deep.

"A" Drawer

Drawer Face Dimensions: 22" wide, 3 ¼" high, 1" thick.
Drawer Body Inside Dims.: 19" wide, 2" high, 25 ½" deep.
Weight Capacity: 75 lbs.

Top "A" drawer can be replaced with a writing surface.

"B" Drawer

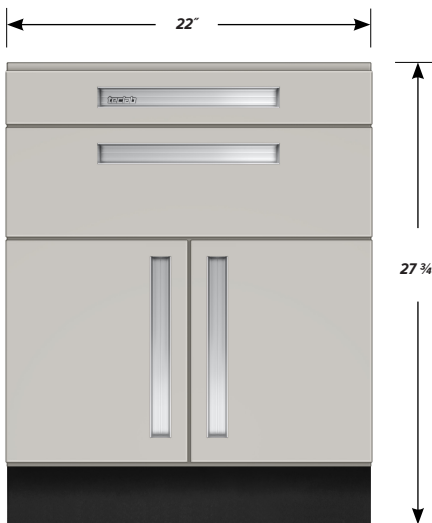
Drawer Face Dimensions: 22" wide, 6 1/16" high, 1" thick.
Drawer Body Inside Dims.: 19" wide, 5" high, 25 ½" deep.
Weight Capacity: 75 lbs.

"A" Doors

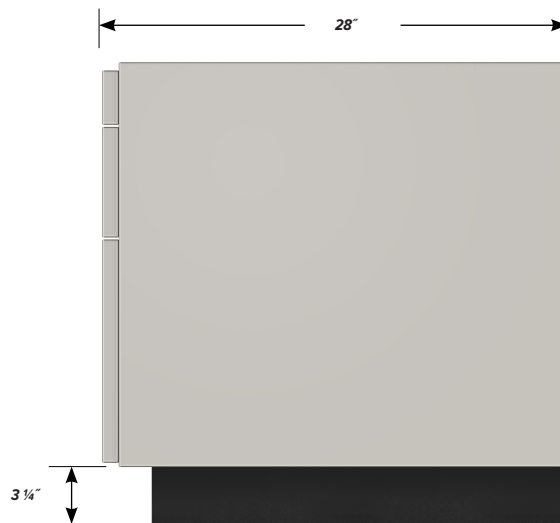
Door Face Dimensions: 11" wide, 13 ½" high, 1" thick.

Sliding Tray

Dimensions: 19" wide, 2" high, 25 ½" deep.
Weight Capacity: 75 lbs.



FRONT



SIDE