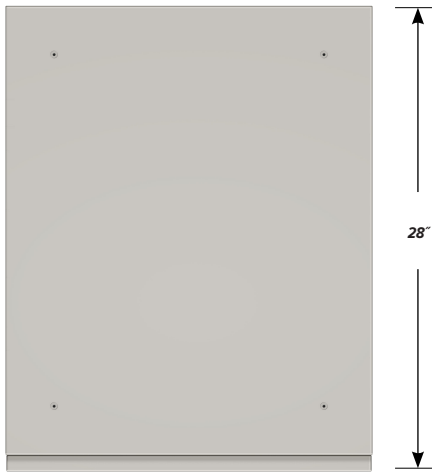


**DESK HIGH BASE CABINET C-2108**

Teclab Base Cabinets are constructed of only top quality, heavy-duty, furniture-grade, cold-rolled steel, double-braced and welded at all critical joints; twin full-perimeter frames formed of heavy gauge steel, welded to provide strength and rigidity; heavy-duty drawers that glide effortlessly on precision steel ball bearings; cabinet doors that open and close with authority and precision using self-closing hinges; brushed aluminum pulls that are recessed for clean lines and unobtrusive operation; durable, textured paint finish, in a wide selection of mar-resistant, easy-to-clean colors.



**TOP**

**C-2108 FEATURES**

**Two "A" drawer, Double "B" door base cabinet with sliding bottom tray.**

Cabinet Dimensions: 22" wide, 27 3/4" high, 28" deep.

**"A" Drawer**

Drawer Face Dimensions: 22" wide, 3 1/4" high, 1" thick.  
 Drawer Body Inside Dims.: 19" wide, 2" high, 25 1/2" deep.  
 Weight Capacity: 75 lbs.

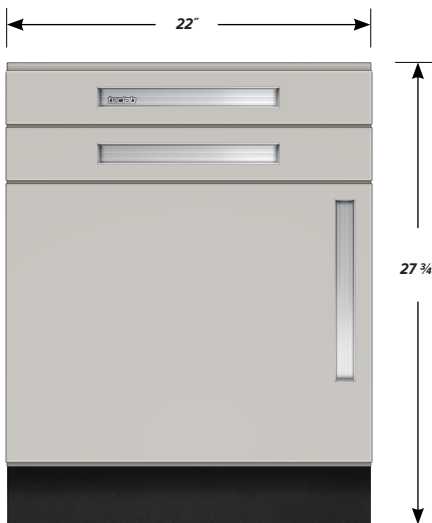
*Top "A" drawer can be replaced with a writing surface.*

**"B" Doors**

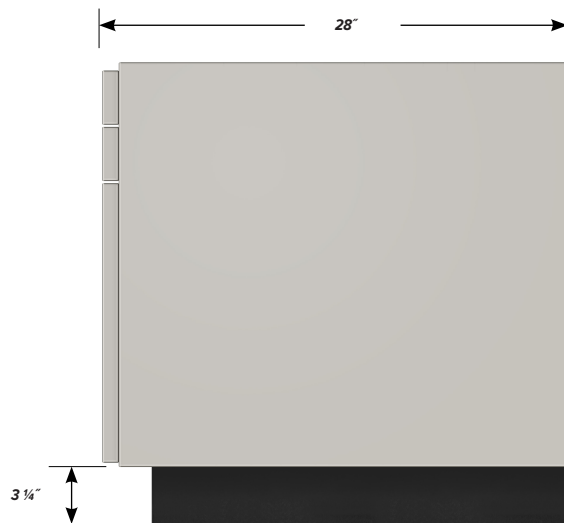
Door Face Dimensions: 11" wide, 16 15/16" high, 1" thick.

**Sliding Tray**

Dimensions: 19" wide, 2" high, 25 1/2" deep.  
 Weight Capacity: 75 lbs.



**FRONT**



**SIDE**