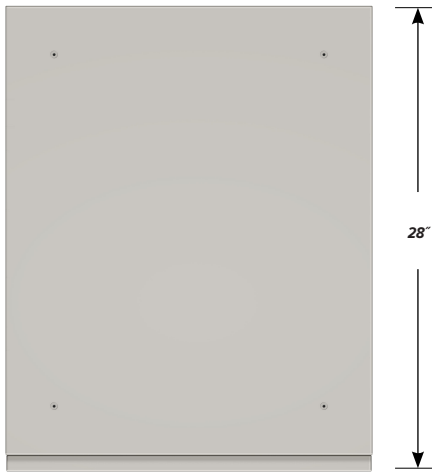


**DESK HIGH BASE CABINET C-2102**

Teclab Base Cabinets are constructed of only top quality, heavy-duty, furniture-grade, cold-rolled steel, double-braced and welded at all critical joints; twin full-perimeter frames formed of heavy gauge steel, welded to provide strength and rigidity; heavy-duty drawers that glide effortlessly on precision steel ball bearings; cabinet doors that open and close with authority and precision using self-closing hinges; brushed aluminum pulls that are recessed for clean lines and unobtrusive operation; durable, textured paint finish, in a wide selection of mar-resistant, easy-to-clean colors.

Any Base Cabinet can be made **MOBILE**.  
 Height of a Desk High cabinet will increase by 2 ¾".

**TOP**

**C-2102 FEATURES**

**Single "E" door cabinet with LH pull and sliding bottom tray.**

Cabinet Dimensions: 22" wide, 27 ¾" high, 28" deep.

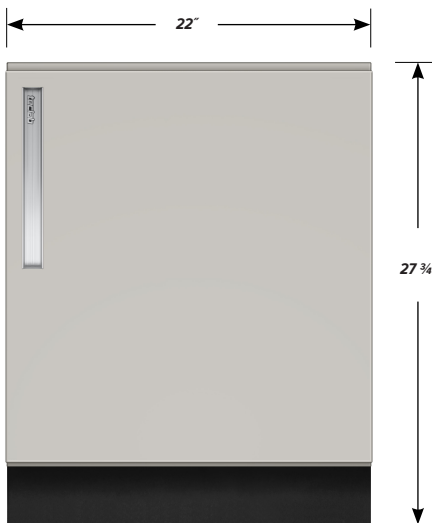
**"E" Door with Left Hand Pull**

Door Face Dimensions: 22" wide, 23 ¾" high, 1" thick.

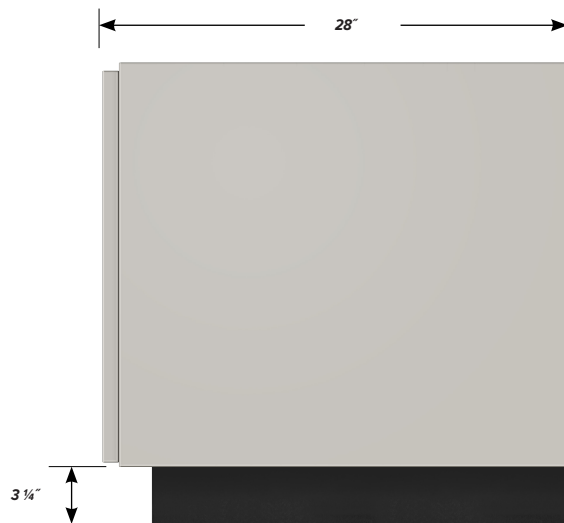
**Sliding Tray**

Dimensions: 19" wide, 2" high, 25 ½" deep.

Weight Capacity: 75 lbs.



**FRONT**



**SIDE**