

DESK HIGH BASE CABINET C-2004

Teclab Base Cabinets are constructed of only top quality, heavy-duty, furniture-grade, cold-rolled steel, double-braced and welded at all critical joints; twin full-perimeter frames formed of heavy gauge steel, welded to provide strength and rigidity; heavy-duty drawers that glide effortlessly on precision steel ball bearings; cabinet doors that open and close with authority and precision using self-closing hinges; brushed aluminum pulls that are recessed for clean lines and unobtrusive operation; durable, textured paint finish, in a wide selection of mar-resistant, easy-to-clean colors.



TOP

C-2004 FEATURES

Two "A" drawer, double "B" door base cabinet with sliding bottom tray.

Cabinet Dimensions: 30" wide, 27 3/4" high, 28" deep

"A" Drawer

Drawer Face Dimensions: 30" wide, 3 1/4" high, 1" thick.
 Drawer Body Inside Dims.: 27" wide, 2" high, 25 1/2" deep.
 Weight Capacity: 75 lbs.

Top "A" drawer can be replaced with a writing surface.

"B" Doors

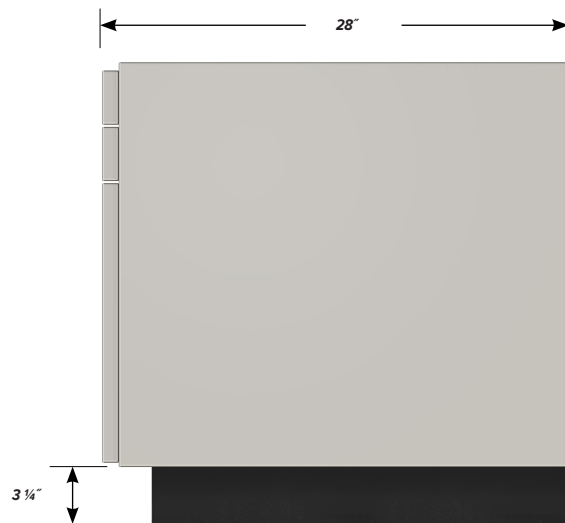
Door Face Dimensions: 14 3/8" wide, 16 15/16" high, 1" thick.

Sliding Tray

Dimensions: 27" wide, 2" high, 25 1/2" deep.
 Weight Capacity: 75 lbs.



FRONT



SIDE