

BENCH HIGH BASE CABINET C-1508

Teclab Base Cabinets are constructed of only top quality, heavy-duty, furniture-grade, cold-rolled steel, double-braced and welded at all critical joints; twin full-perimeter frames formed of heavy gauge steel, welded to provide strength and rigidity; heavy-duty drawers that glide effortlessly on precision steel ball bearings; cabinet doors that open and close with authority and precision using self-closing hinges; brushed aluminum pulls that are recessed for clean lines and unobtrusive operation; durable, textured paint finish, in a wide selection of mar-resistant, easy-to-clean colors.

Any Base Cabinet can be made **MOBILE**.



C-1508 FEATURES

Top "A" door with LH pull and sliding bottom tray, bottom "A" door with RH pull and sliding bottom tray base cabinet.

Cabinet Dimensions: 15" wide, 33 ¾" high, 28" deep

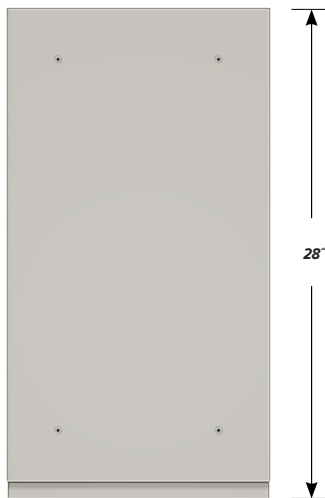
"A" Doors

Door Face Dimensions: 15" wide, 13 ½" high, 1" thick.

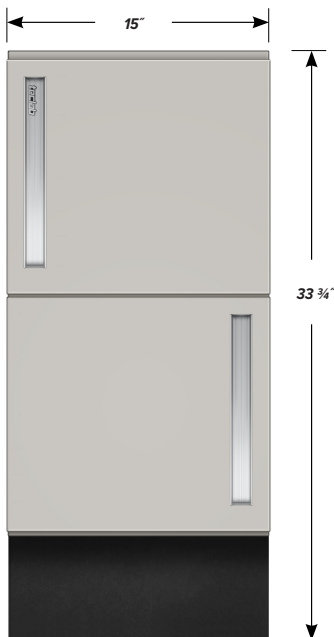
Sliding Tray

Dimensions: 12" wide, 2" high, 25 ½" deep.

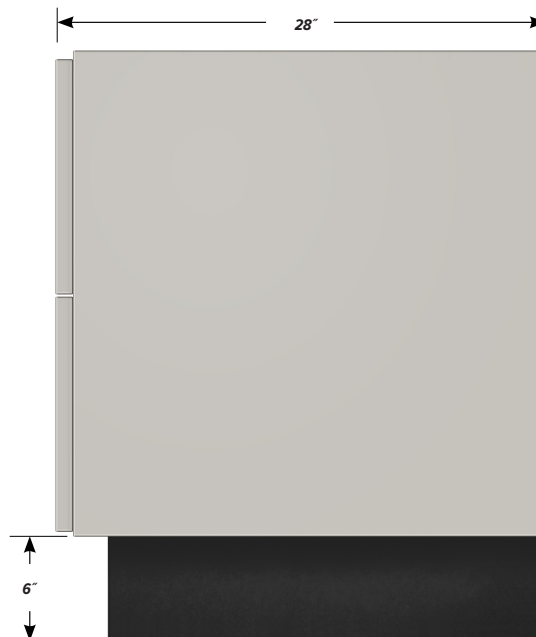
Weight Capacity: 75 lbs.



TOP



FRONT



SIDE