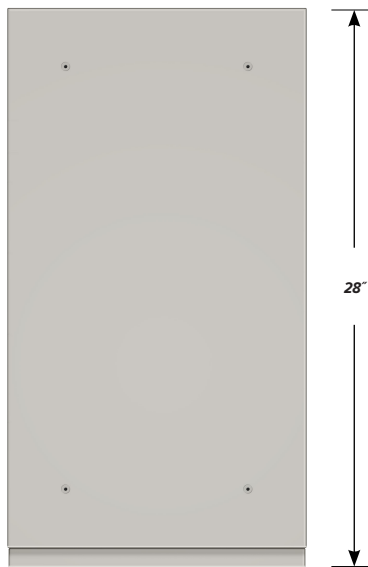
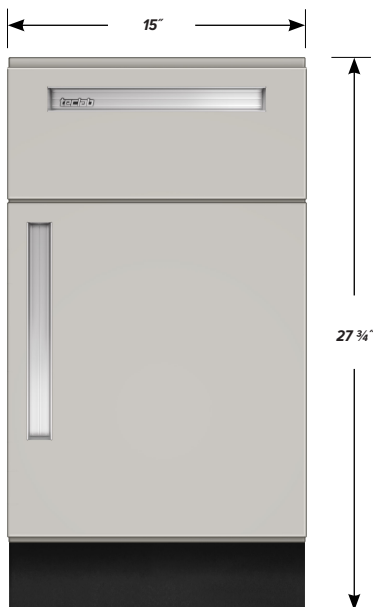


DESK HIGH BASE CABINET C-1004

Teclab Base Cabinets are constructed of only top quality, heavy-duty, furniture-grade, cold-rolled steel, double-braced and welded at all critical joints; twin full-perimeter frames formed of heavy gauge steel, welded to provide strength and rigidity; heavy-duty drawers that glide effortlessly and silently on precision steel ball bearings; cabinet doors that open and close with authority and precision; brushed aluminum pulls that are recessed for clean lines and unobtrusive operation; durable, textured paint finish, in a wide selection of mar-resistant, easy-to-clean colors.



TOP



FRONT

C-1004 FEATURES

One "B" drawer, one "B" door with LH pull and sliding bottom tray base cabinet.

Cabinet Dimensions: 15" wide, 27 3/4" high, 28" deep

"B" Drawer

Drawer Face Dimensions: 15" wide, 6 1/16" high, 1" thick.

Drawer Body Inside Dimensions: 12" wide, 5" high, 26" deep.

Weight Capacity: 75 lbs.

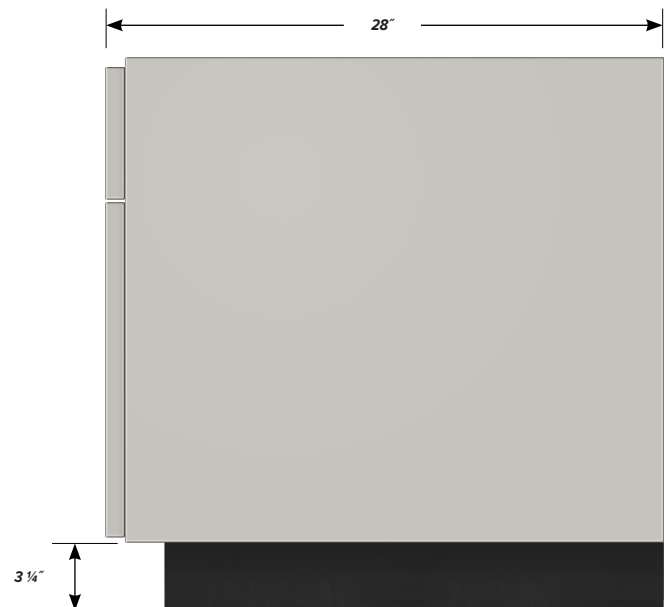
"B" Door with Left Hand Pull

Door Face Dimensions: 15" wide, 16 15/16" high, 1" thick.

Sliding Tray

Dimensions: 12" wide, 2" high, 26" deep.

Weight Capacity: 75 lbs.



SIDE